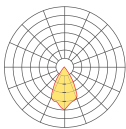
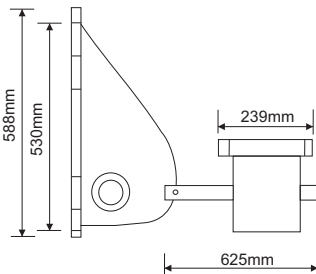
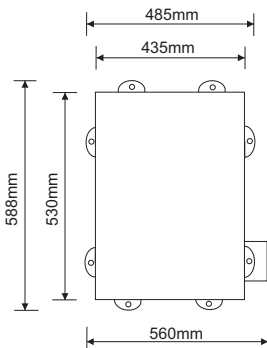
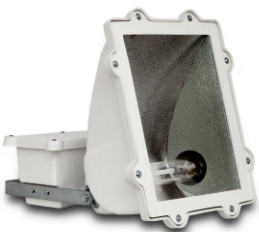
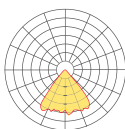


## RL1000 FLOODLIGHT

### Product details



60°



90°

### Features

- Corrosion resistant glass reinforced polyester housing.
- Heat tempered glass.
- External control gear compartment.
- High purity aluminium reflector.

### Benefits

- Universal electroplated mounting stirrup with pole clamp.
- Ingress protection rating - IP 65.
- Optional high mast stirrup.

### Applications

Security  
Sports fields  
Car parks  
Large work areas  
Dock, railway & container yards  
High mast installations

### Warranty

Reeflite glass reinforced polyester (GRP) housings are guaranteed for 15 years against deterioration due to ultra-violet radiation, hail damage and corrosion at coastal areas.

## RL1000 FLOODLIGHT

### Specifications

Product Code	RL1000MH	RL1000HPS
Approx System Wattage	1000W MH - Narrow/Wide	1000W HPS - Narrow/Wide
Absolute Lumens	80000lm	130000lm
Colour Temperature	4800K	4800K
CRI	≥80	≥80
Life Span	TBA	TBA
Average temp	min -20° max +35°	min -20° max +35°
Housing Material	Fibreglass	Fibreglass
Packaging Weights and dimensions	580mm x 450mm x 600mm @ 21.30Kg	580mm x 450mm x 600mm @ 21.30Kg
Beam Angle	60° ( Narrow beam) 90°(Wide beam)	60° ( Narrow beam) 90°(Wide beam)
IP Rating	IP 65	IP 65
Power Factor	0.95	0.95
Starting /Running Amp	9.60 A - 5.20 A	8.80 A - 5.50 A
Suggested mounting height	12 - 40m Max	12 - 40m Max