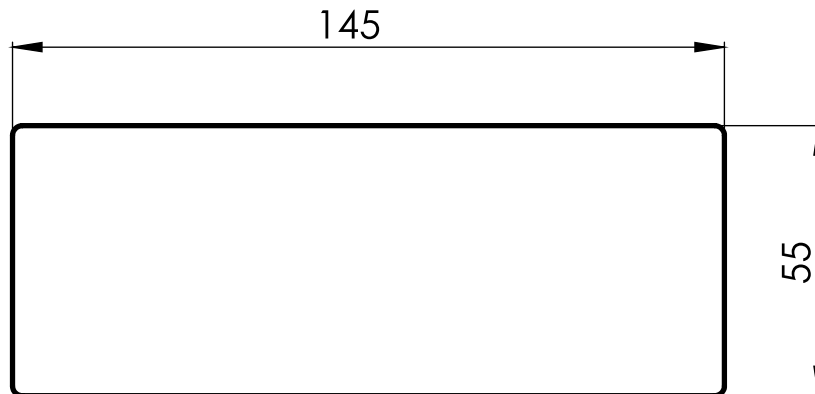


# ESND Series



## REFERENCE

## LAMPS

## LENGTH

Narrow and shallow economical fitting.

ESND 20-2

2X20W

655

Twin tube fittings available in 600mm (2'), 1200mm (4') and 1500mm (5') nominal lengths.

ESND 40-2

2X40W

1260

ESND 65-2

2X65W

1560

Ordering data & main dimensions (mm).

Body and ends manufactured from cold rolled steel, hot dip zinc phosphated and finished in a baked, high gloss, white epoxy polyester powder coat.

Wrap around acrylic diffuser has raised, square-based prisms for controlled light distribution and reduction of visible glare.

Supply voltage 230V 50Hz.

S.A.B.S. approved.

Available in Electronic or Switch Start control gear.