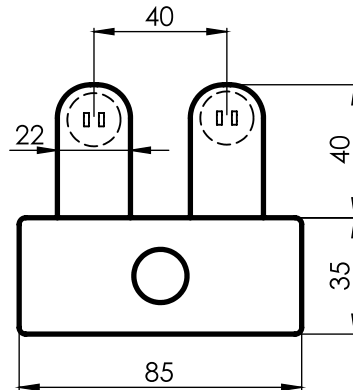


# DTRT Series



## REFERENCE

## LAMPS

## LENGTH

## D.E.T. approved

DTRT 20-1  
DTRT 20-2  
DTRT 40-1  
DTRT 40-2  
DTRT 65-1  
DTRT 65-2

1X20W  
2X20W  
1X40W  
2X40W  
1X65W  
2X65W

623  
623  
1232  
1232  
1532  
1532

Single or twin tube fittings available in 600mm (2'), 1200mm (4') and 1500mm (5') nominal lengths.

Manufactured from cold rolled steel, hot dip zinc phosphated and finished in a baked, high gloss, white epoxy polyester powder coat.

Ordering data & main dimensions (mm).

Top attached to body with screw fixing.

Cross-braced for rigidity, with ventilation slots.

Knock-out in each end for through wiring.

Fitted with rotor type lampholders and three way terminal block.

Starters accessible without removing lamps.

S.A.B.S. approved control gear with non-rotating ballast fixing screws.

Supply voltage 230V 50Hz.

Available in Electronic or Switch Start control gear.