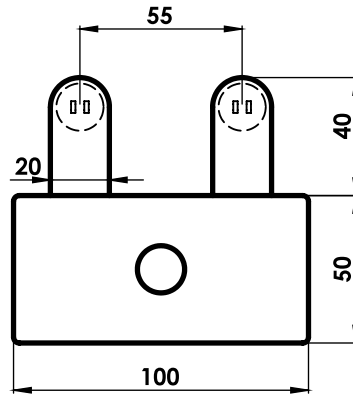


# DET Series



## REFERENCE

## LAMPS

## LENGTH

D.E.T. approved.

DET 20-1

1X20W

620

Single or twin tube fittings available in 600mm (2'), 1200mm (4') and 1500mm (5') nominal lengths.

DET 20-2

2X20W

620

DET 40-1

1X40W

1227

DET 40-2

2X40W

1227

DET 65-1

1X65W

1527

DET 65-2

2X65W

1527

Manufactured from cold rolled steel, hot dip zinc phosphated and finished in a baked, high gloss, white epoxy polyester powder coat.

Ordering data & main dimensions (mm).

Top attached to body with screw fixing.

Cross-braced for rigidity, with ventilation slots.

Knock-out in each end for through wiring.

Fitted with rotor type lampholders and three way terminal block.

Starters accessible without removing lamps.

S.A.B.S. approved control gear with non-rotating ballast fixing screws.

Supply voltage 230V 50Hz.

Available in Electronic or Switch Start control gear.

**flolite**

lighting manufacturers & distributors

www.flolite.co.za . sales@flolite.co.za . T: 011 394 3810 . F: 011 975 5477