

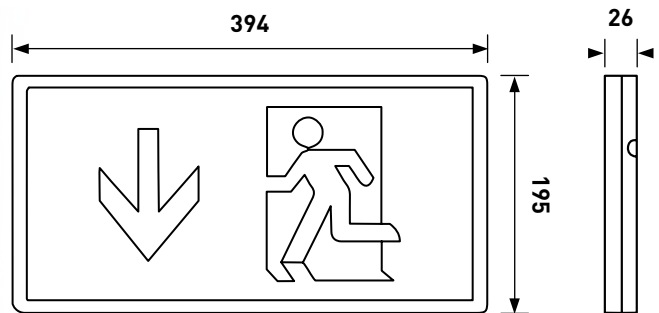
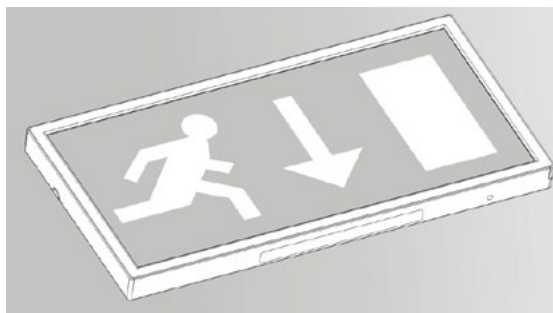
LEMEXM3 Emergency Lighting

3HR MAINTAINED EMERGENCY EXIT BOX

NOTE – To comply with regulations, installation must be carried out by qualified electrician and in accordance with the current IEE Wiring Regulations (BS7671) and Building Regulations.



ENSURE ELECTRICAL SUPPLY IS DISCONNECTED/ ISOLATED BEFORE COMMENCING INSTALLATION



SUGGESTED INSTALLATION METHOD

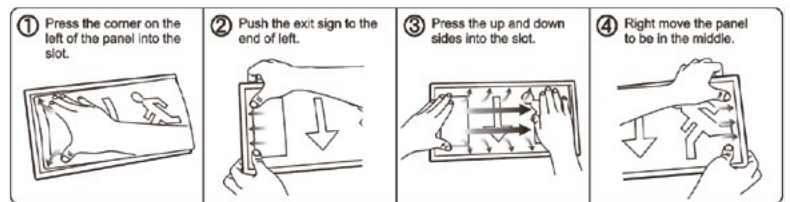
1. Ensure supply is OFF and battery is disconnected, then follow the steps in B above, then once the luminaire is mounted securely, make the connection to the mains wiring
2. When all connections have been made reassemble the fitting completely



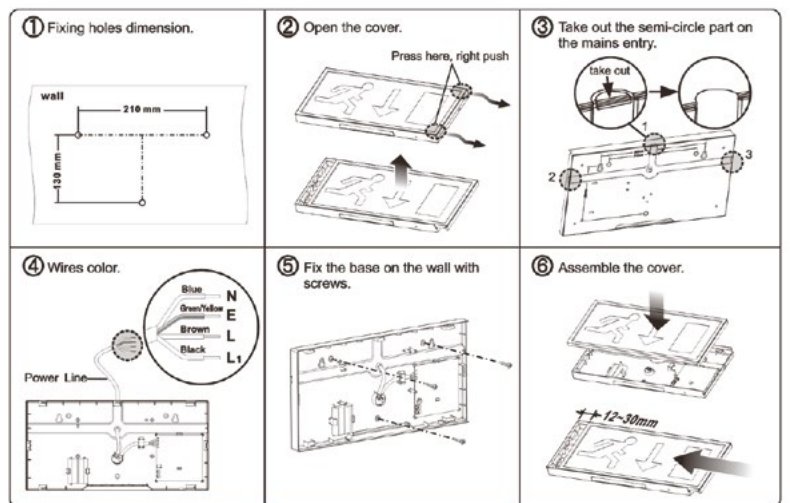
- **N** (Blue)
- **E** (Green/Yellow)
- **L** (Brown)
- **L1** (Black)

3. Switch on 220~240V AC supply and check that the green LED indicator illuminates to confirm charging of batteries
4. Allow a short period for part charging of the batteries and then isolate the mains supply to the fitting in order to check the correct operation of the fitting in emergency mode. When first used, after a continuous charge for 36 hours, a mains failure should be simulated to ensure that the luminaire operates for its specified time(only at a safe & appropriate time). The fitting will be fully charged within 24 hours

ASSEMBLE THE GREEN EXIT SIGN PANEL



INSTALLATION



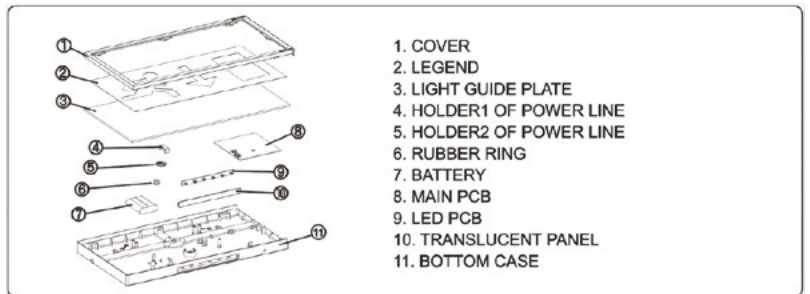
▼ Continued

LEMEXM3 Emergency Lighting

3HR MAINTAINED EMERGENCY EXIT BOX

SPECIFICATIONS

- **Input Voltage:** AC220~240V 50/60Hz 5W
- **LED Power:** 1.3W, 45lumens
- **Surfacing brightness:** ≥200cd/m²
- **Fuse:** 1A 250VAC
- **Battery:** Ni-MH 3.6V 2000mAh
- **LED's built-in:** 20+6pcs
- **Operating environmental temperature:** 0°~40°
- **Re-charging time:** 24 hours
- **Emergency duration:** Min 3 hours



CORRECT OPERATION

- A monthly function test and yearly full duration test should be conducted and can be recorded in the below table
- It is recommended that batteries are replaced after 4years service life and are disposed of in a suitable recycling location

ROUTINE TEST RECORD

Month	Test	First Year		Second Year		Third Year		Fourth Year		Fifth Year	
		Signed	Date	Signed	Date	Signed	Date	Signed	Date	Signed	Date
1	Function										
2	Function										
3	Function										
4	Function										
5	Function										
6	Function										
7	Function										
8	Function										
9	Function										
10	Function										
11	Function										
12	Function										

Eventually, you may want to replace this fitting:

When your fitting and or battery pack come to the end of their life or you choose to update or upgrade the fitting by replacing it, please do not dispose of it with your normal household waste, please recycle where facilities exist. When you need to dispose of this fitting, check with your retailer or local authority for suitable options. New regulations will encourage the recycling of waste from Electrical and Electronic Equipment (European "WEEE Directive" effective August 2005).

