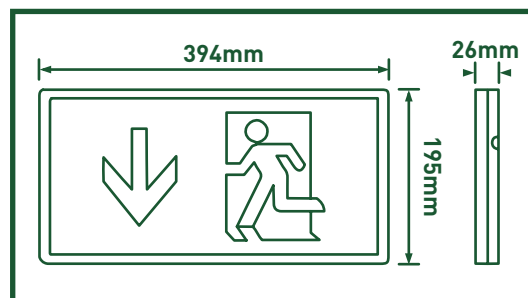


LED Emergency 3HR maintained exit box



3 years standard guarantee and 1 year onsite warranty available in the UK. Rest of the world may vary, please ask your local distributor for more information.

- Materials: Polycarbonate, body and opal panel with legend
- 3.6V 2Ah Ni-MH batteries
- Complete with white LED
- High brightness
- Emergency operation time 3hrs
- DC or AC/DC operated
- Can be also used as Non-Maintained
- Easy installation with replaceable exit panel
- Latest ISO 7010 format legend
- Viewing distance = 32m

[Click here for more information](#)

Cat. No	Description	Voltage	Barcode
LEMEXM3	Standard with Arrow Down Legend	230V	5015056531601
LEMEXUA	Arrow UP Legend Panel (order with LEMEXM3)	-	5015056531618
LEMEXLA	Arrow LEFT Legend Panel (order with LEMEXM3)	-	5015056531625
LEMEXRA	Arrow RIGHT Legend Panel (order with LEMEXM3)	-	5015056531632

Continued

Standards

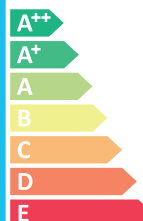
EN 60598-1	Luminaires - General requirements
EN 60598-2-1	Luminaires - Fixed
EN 60598-2-22	Luminaires -Emergency
EN 61347-1	Lamp controlgear - Part 1: General and safety requirements
EN 61347-2-7	Lamp controlgear - Particular requirements for battery supplied electronic controlgear for emergency lighting
EN 61347-2-13	Lamp controlgear - Part 2-13 : Particular requirements for d.c. or a.c. supplied electronic controlgear for LED modules
EN 55015	Limits and methods of measurement of radio disturbance characteristics of electrical lighting and similar equipment



LUCECO



The luminaire contains built-in LED lamps.



A+

The lamps cannot be changed in the luminaire.

874/2012



RoHS



EN 61547

Equipment for general lighting purposes - EMC immunity requirements

EN 61000-3-2

Electromagnetic compatibility (EMC) - Part 3-2: Limits - Limits for harmonic current emissions

EN 62471

Photobiological safety of lamps and lamp systems

2002/96/EC

Waste Electrical & Electronic Equipment (WEEE)

2011/65/EU

Restriction of the use of certain Hazardous Substances in EEE (RoHS)

(EC) No 1907/2006

The Registration, Evaluation, Authorisation and Restriction of Chemicals (REACH)

Tech Help Line

UK - **0845 194 7584**

Non UK - **+44 (0)1952 238 100**

Supplied by

BG Electrical Ltd

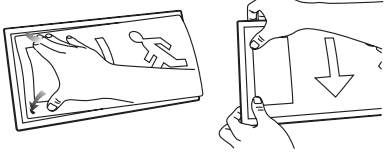
Stafford Park 1 TF3 3BD ENGLAND

Visit our website at

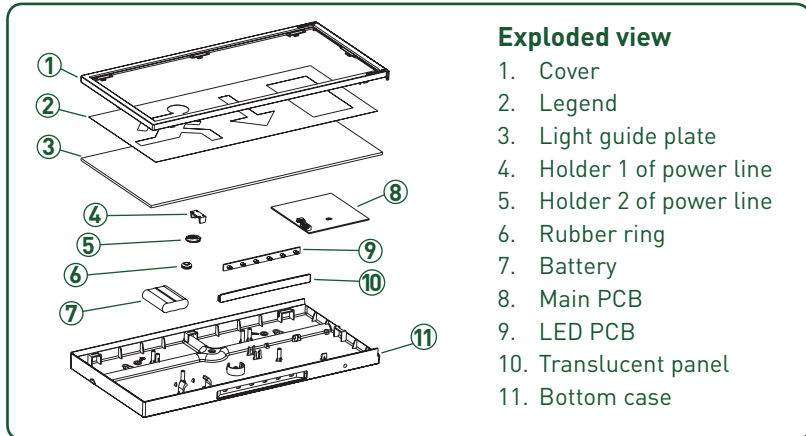
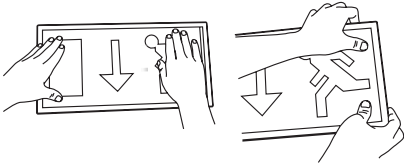
www.luceco.uk

Assemble the green exit sign panel

- ① Press the corner on the left of the panel into the slot.
- ② Press the exit sign to the end of left.



- ③ Press the up and down sides into the slot.
- ④ Right move the panel to be in the middle.



Exploded view

1. Cover
2. Legend
3. Light guide plate
4. Holder 1 of power line
5. Holder 2 of power line
6. Rubber ring
7. Battery
8. Main PCB
9. LED PCB
10. Translucent panel
11. Bottom case

Tech Help Line

UK - **0845 194 7584**

Non UK - **+44 (0)1952 238 100**

Supplied by

BG Electrical Ltd

Stafford Park 1 TF3 3BD ENGLAND

Visit our website at

www.luceco.uk